



# HOKKAIDO UNIVERSITY

|                  |   |
|------------------|---|
| Title            | NOTES ON THE ANTHOMYIIDAE FROM SAKHALIN AND THE KURILES (DIPTERA)   |
| Author(s)        | Suwa, Masaaki   |
| Citation         | Insecta matsumurana. New series : journal of the Faculty of Agriculture Hokkaido University, series entomology., 22, 1-14 |
| Issue Date       | 1981-06   |
| Doc URL          | <a href="https://hdl.handle.net/2115/9809">https://hdl.handle.net/2115/9809</a>   |
| Type             | departmental bulletin paper   |
| File Information | 22_p1-14.pdf  |



NOTES ON THE ANTHOMYIIDAE FROM SAKHALIN  
AND THE KURILES (DIPTERA)

By MASAACKI SUWA

*Abstract*

SUWA, M. 1981. Notes on the Anthomyiidae from Sakhalin and the Kuriles (Diptera). *Ins. matsum. n. s.* 22: 1-14, 10 figs.

Anthomyiidae from Sakhalin and the Kurile Islands are dealt with and classified into 29 species belonging to 8 genera. Of them 9 species are new to Sakhalin and 16 new to the Kuriles. *Delia cuneata* Tiensuu is recorded from Sakhalin as the first additional record to the species, which was originally based on a single male specimen from Finland. Except for *D. cuneata* all of the species are common to Hokkaidô.

*Author's address.* Entomological Institute, Faculty of Agriculture, Hokkaidô University, Sapporo, 060 Japan.

## Contents

|  |    |
|--|----|
| Introduction .....                                   | 3  |
| Enumeration  |    |
| 1. <i>Fucellia apicalis</i> Kertész .....            | 3  |
| 2. <i>Fucellia fucorum</i> (Fallén) .....            | 4  |
| 3. <i>Fucellia hypopygialis</i> Ringdahl .....       | 4  |
| 4. <i>Fucellia kamtchatica</i> Ringdahl .....        | 4  |
| 5. <i>Chirosia flavipennis</i> (Fallén) .....        | 5  |
| 6. <i>Delia antiqua</i> (Meigen) .....               | 5  |
| 7. <i>Delia brunnescens</i> (Zetterstedt) .....      | 5  |
| 8. <i>Delia conversata</i> (Tiensuu) .....           | 5  |
| 9. <i>Delia cuneata</i> Tiensuu .....                | 6  |
| 10. <i>Delia echinata</i> (Séguy) .....              | 9  |
| 11. <i>Delia flabellifera</i> (Pandellé) .....       | 9  |
| 12. <i>Delia floralis</i> (Fallén) .....             | 9  |
| 13. <i>Delia longitheca</i> Suwa .....               | 10 |
| 14. <i>Delia planipalpis</i> (Stein) .....           | 10 |
| 15. <i>Delia platura</i> (Meigen) .....              | 10 |
| 16. <i>Delia takizawai</i> Suwa .....                | 10 |
| 17. <i>Delia tenuiformis</i> Suwa .....              | 10 |
| 18. <i>Hylemya latifrons</i> Schnabl .....           | 11 |
| 19. <i>Lasiomma octoguttatum</i> (Zetterstedt) ..... | 11 |
| 20. <i>Paraprosalpia silvatica</i> Suwa .....        | 11 |
| 21. <i>Paraprosalpia silvestris</i> (Fallén) .....   | 11 |
| 22. <i>Pegohylemyia angulosa</i> (Ringdahl) .....    | 11 |
| 23. <i>Pegohylemyia macra</i> Karl .....             | 12 |
| 24. <i>Pegohylemyia sonchi</i> (Hardy) .....         | 12 |
| 25. <i>Pegohylemyia striolata</i> (Fallén) .....     | 12 |
| 26. <i>Pegomya criniventris</i> Suwa .....           | 12 |
| 27. <i>Pegomya geniculata</i> (Bouché) .....         | 13 |
| 28. <i>Pegomya pulchripes</i> (Loew) .....           | 13 |
| 29. <i>Pegomya vera</i> Suwa .....                   | 13 |
| References .....                                     | 13 |

## INTRODUCTION

Up to the present about 140 species of Anthomyiidae have been recorded from Hokkaidô, Japan. Of them ca. 65% are common to Europe. This remarkable ratio of the common species implies an important role assumed by Sakhalin as a faunal bridge between northern Japan and the northern Eurasian continent. Nevertheless, we know little on the Anthomyiidae of Sakhalin, only 3 species, namely *Fucellia fucorum*, *Delia antiqua* and *Delia floralis*, being known to occur there (Katô, 1939; Endô, 1944; Hennig, 1966; Suwa, 1974). Also on the Anthomyiidae of the Kuriles we have a quite meagre knowledge, only 5 species, *Fucellia apicalis*, *Fucellia fucorum*, *Fucellia kamtschatica*, *Delia floralis* and *Delia planipalpis*, having been recorded (Hennig, 1966; Kuwayama, 1967\*).

Recently I have examined specimens of Anthomyiidae from Sakhalin and the Kuriles preserved in the Entomological Institute of Hokkaidô University and in the Hokkaidô National Agricultural Experiment Station. The specimens are found to be composed of 28 species. A total of 29 species are now known to occur in the areas, 12 from Sakhalin and 21 from the Kuriles. They will be given hereinafter. Except for 1 species from Sakhalin all are common to Hokkaidô.

Before going further I wish to express my sincere thanks to Prof. S. Takagi, Hokkaidô University, for critical reading of the manuscript. Thanks are also due to Mr. H. Horiguchi and Mr. S. Imabayashi, Hokkaidô National Agricultural Experiment Station, for their help on the loan of some valuable material.

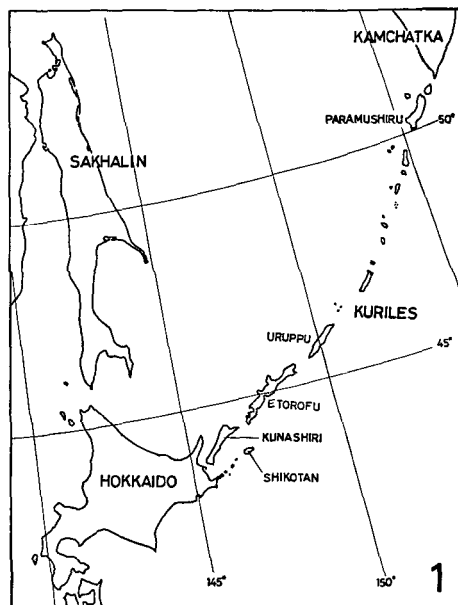


Fig. 1. Map of Sakhalin and the Kurile Islands.

## ENUMERATION

### 1. *Fucellia apicalis* Kertész, 1908

*Fucellia apicalis*: Fan, 1965: 37; Hennig, 1966: 7; Kuwayama, 1967: 127; Suwa, 1974: 17.

Material examined. Kuriles: — Chinomiji, Okappu & Tôfutsu, Kunashiri, 5 ♂, 5-18-viii-1940 (S. Kuwayama & Y. Sugihara).

Distribution. Kuriles (Kunashiri); Japan (Hokkaidô, Honshû, Shikoku & Kyûshû); Bonin Is.; China (Shantung, Chiangsu, Chechiang, Fuchien & Kuangtung).

\* From the Kuriles Kuwayama (1967) recorded 9 species of Anthomyiidae. Five of them are, however, undetermined or questionable as to identification, so that they are left out of consideration here.

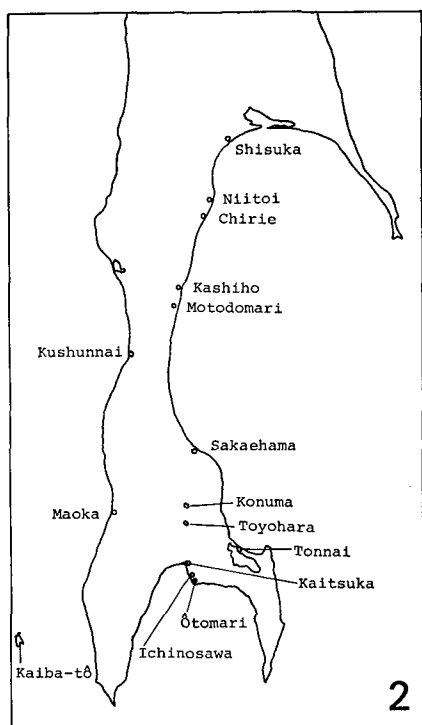


Fig. 2. Map of southern Sakhalin.

This is the commonest kelp fly in Japan. The first record of this species from the Kuriles was given by Kuwayama (1967).

## 2. *Fucellia fucorum* (Fallén, 1819)

*Fucellia fucorum*: Hennig, 1966: 11; Suwa, 1974: 18.

Material examined. Sakhalin: — Chirie, 2 ♂, 2 ♀, 6–viii–1914 (Adachi & Isshiki). Kuriles: — Rubetsu, Etorofu, 1 ♂, 2–10–vii–1935 (Y. Sugihara); Tokotan, Uruppu, 3 ♂, 9–23–viii–1936 (Y. Sugihara); Paramushiru, 2 ♀, 28–vii–12–viii–1935 (Nishi, Hatsumi, Oka & Ôta), & 3 ♀, 27–vii–1941 (H. Kôno & S. Sumimiya).

Distribution. Sakhalin; Kuriles (Etorofu, Uruppu & Paramushiru); Japan (Hokkaidô); Northern part of Holarctic region.

This species was already recorded from Sakhalin (Rakuma, near Maoka) and Kuriles (Mishima, Uruppu) by Hennig (1966), and from Sakhalin (Chirie) by Suwa (1974).

## 3. *Fucellia hypopygialis* Ringdahl, 1930

*Fucellia hypopygialis*: Hennig, 1966: 13; Suwa, 1974: 18.

Material examined. Kuriles: — Paramushiru, 1 ♂, 28–vii–1935 (Nishi, Hatsumi, Oka & Ôta).

Distribution. Kuriles (Paramushiru); Japan (Hokkaidô); Kamchatka; Commander Is.; North America (Alaska & Labrador).

## 4. *Fucellia kamtschatica* Ringdahl, 1930

*Fucellia kamtschatica*: Hennig, 1966: 14; Kuwayama, 1967: 127; Suwa, 1974: 18.

Material examined. Sakhalin: — Maoka, 1 ♂, 24–vii–1934 (C. Watanabe & T. Inoue); Chirie, 2 ♂, 6–viii–1914 (Adachi & Isshiki); Motodomari, 4 ♂, 3 ♀, 16–17–viii–1914 (Adachi & Isshiki); Kashiho, 1 ♂, 10–vii–1933 (Uchida, Okamoto & Sawamoto); Kaitsuka, 1 ♂, 10–vii–1909 (Oguma); Kushunnai, 1 ♂, 6–viii–1909 (Oguma); Sakaehama, 1 ♂, 1 ♀, 19–viii–1914 (Adachi & Isshiki); Niitoi, 2 ♂, 1 ♀, 11–viii–1914 (Adachi & Isshiki); Tonnai, 1 ♂, 1–viii–1914 (Adachi & Isshiki). Kuriles: — Shikotan, 1 ♂, 25–26–vii–1940 (S. Kuwayama & Y. Sugihara); Furu-kamappu, Kunashiri, 1 ♂, 13–14–viii–1940 (S. Kuwayama & Y. Sugihara); Paramushiru, 1 ♂, 2 ♀, 12–19–viii–1935 (Nishi, Hatsumi, Oka & Ôta).

Distribution. Sakhalin; Kuriles (Shikotan, Kunashiri & Paramushiru); Japan (Hokkaidô & Honshû); Kamchatka; Aleutian Is. (Unalaska); Alaska.

This species is new to Sakhalin. From the Kuriles it was recorded by Kuwayama (1967).

5. *Chirosia flavipennis* (Fallén, 1823)

*Chirosia flavipennis*: Hennig, 1966: 61; Suwa, 1974: 24.

Material examined. Sakhalin: — Tonnai, 2 ♀, 1–viii–1914 (Adachi & Isshiki).

Distribution. Sakhalin; Japan (Hokkaidô & Honshû); Europe; North America.

6. *Delia antiqua* (Meigen, 1826)

“Tamanegi-bae”: Endô, 1944: 77. *Hylemyia antiqua*: Katô, 1951: 28. *Hylemyia* (*Delia*) *antiqua*: Fan, 1965: 49. *Delia antiqua*: Pont, 1974: 4; Hennig, 1974: 739; Suwa, 1974: 146.

Material examined. Sakhalin: — Maoka-sandô, 2 ♂, 21–viii–1923 (S. Matsu-mura); Konuma, 1 ♂, 31–viii–1927 (K. Tamanuki).

Distribution. Sakhalin; Japan (Hokkaidô, Honshû & Kyûshû); Holarctic region; Colombia; Brazil.

Endô (1944) reported the occurrence of this species in Sakhalin under the name “Tamanegi-bae”, the Japanese name of *D. antiqua*.

7. *Delia brunnescens* (Zetterstedt, 1845)

*Delia brunnescens*: Hennig, 1974: 759; Suwa, 1977a: 8.

Material examined. Kuriles: — Seseki, Kunashiri, 1 ♂, 16–18–vii–1936 (Y. Sugihara).

Distribution. Kuriles (Kunashiri); Japan (Hokkaidô & Honshû); Europe; ? North America.

8. *Delia conversata* (Tiensuu, 1935)

*Hylemyia angustitarsis*: Ringdahl, 1930: 5, nec Malloch, 1920. *Hylemyia* (*Leptohylemyia*) *conversata* Tiensuu, 1935: 23. *Delia angustitarsis*: Hennig, 1974: 733, nec Malloch, 1920. *Delia conversata*: Suwa, 1974: 162.

Material examined. Sakhalin: — Tonnai, 1 ♂, 1–viii–1914 (Adachi & Isshiki); Motodomari, 1 ♂, 13–viii–1914 (Adachi & Isshiki); Shisuka, 1 ♂, 8–viii–1914 (Adachi & Isshiki); Chirie, 2 ♂, 6–viii–1914 (Adachi & Isshiki).

Distribution. Sakhalin; Japan (Hokkaidô & Honshû); Kamchatka; Siberia; Europe.

According to Hennig (1974) the specimens (8 ♂, Kamchatka) which were determined as *angustitarsis* (Malloch, 1920) by Ringdahl (1930) are referable to *conversata* (Tiensuu, 1935), so that *conversata* is a synonym of *angustitarsis*. The distiphallus of *angustitarsis* figured in the original description, compared with that of “*angustitarsis*” figured by Hennig (1974), is a little more elongate. In this respect *angustitarsis* seems to be similar to *D. auricolor* Suwa, 1974, from which, however, it is easily distinguishable by some other characters. It is the opinion here adopted that *D. conversata* is distinct from the North American *D. angustitarsis*.

In general appearance and also in having a strong apical *pv* on  $t_1$  in the male, this species strongly resembles the following *D. cuneata* Tiensuu, from which,

however, it differs by  $f_3$  with no  $pv$  except for a few preapical ones as well as by the genital structure.

### 9. *Delia cuneata* Tiensuu, 1946

*Delia cuneata* Tiensuu, 1946: 65; Hennig, 1974: 786.

Material examined. Sakhalin: — Shisuka, 1 ♂, 8–viii–1914 (Adachi & Isshiki).  
Distribution. Sakhalin; Finland.

This species was described on the basis of a single male specimen from Finland and there has been no additional record. Except for the shorter *pra* the present specimen from Sakhalin is not significantly different from the original description of *cuneata* or a redescription of the species given by Hennig (1974).

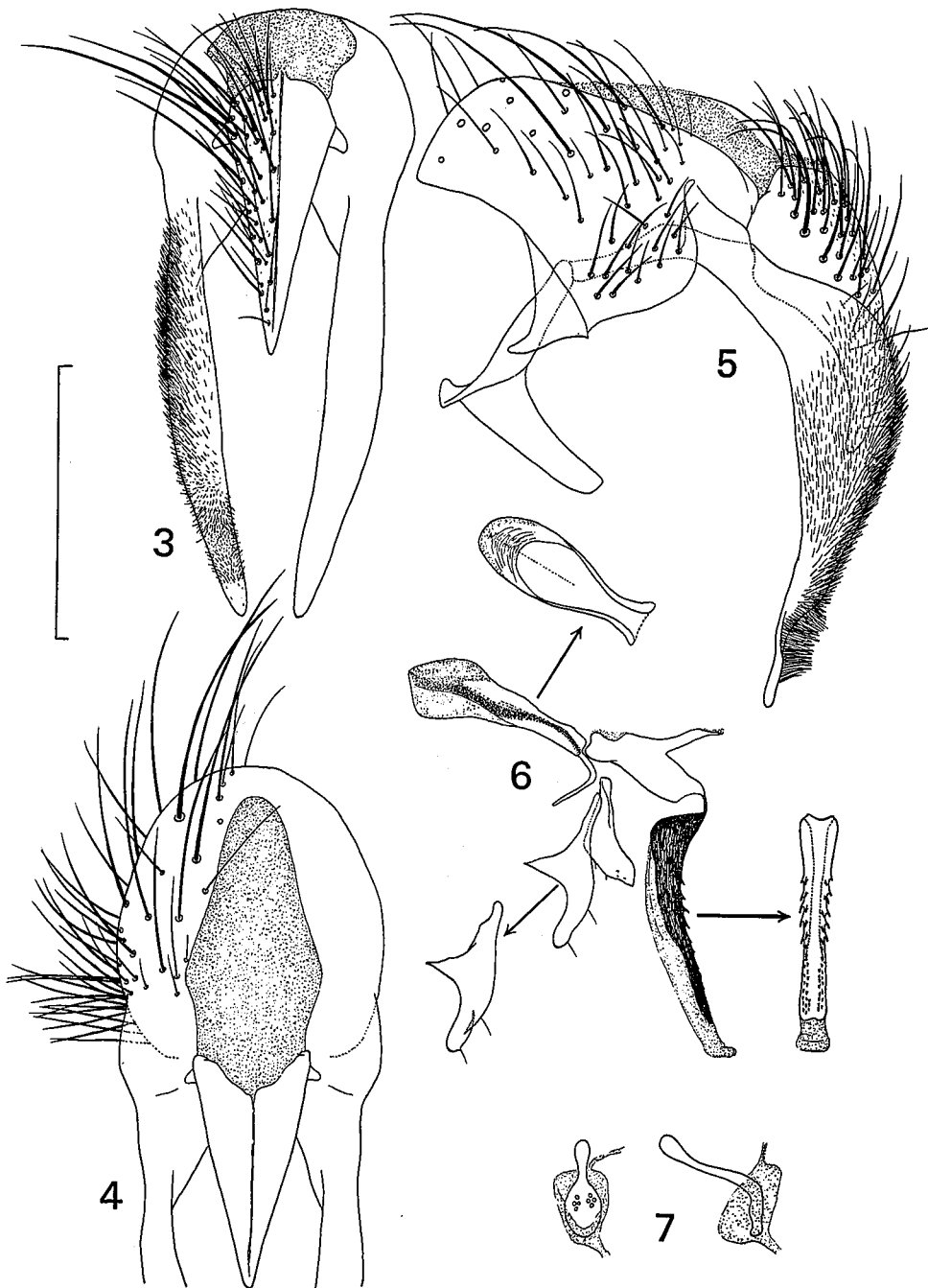
A redescription based on the present specimen will be given as follows: —

♂. Body-length ca. 5.5 mm; wing-length 5.4 mm. Body dark brownish in ground colour; tibiae more or less yellowish. Interfrontalia brownish near lunule in ground colour, becoming darker caudad, with whitish grey pollen; parafacials brownish along anterior margin and blackish along eyes in ground colour, and silvery white in pollinosity; cheeks dark brownish in ground colour and whitish grey in pollinosity; occiput blackish in ground colour, with greyish pollen, which is more or less bluish and purplish; antennae blackish; palpi dark brownish; haustellum with mentum dark brownish and pollinose. Mesonotum blackish in ground colour, greyish and more or less brownish in pollinosity; when viewed from behind with a moderate median and faint paramedian vittae, which are obscure behind the suture. Abdomen dark brownish in ground colour, pale greyish and slightly yellowish in pollinosity; median vitta narrow, more or less broadening cephalad; fore marginal bands invisible (hidden under each preceding tergite?). Legs dark brownish;  $f_1$  narrowly yellowish at apex;  $t_1$  more or less yellowish near base;  $t_2$  and  $t_3$  yellowish. Wings more or less tinged with yellow, rather distinctly at base; calyptrae more or less yellowish; halteres yellowish, paler at knob.

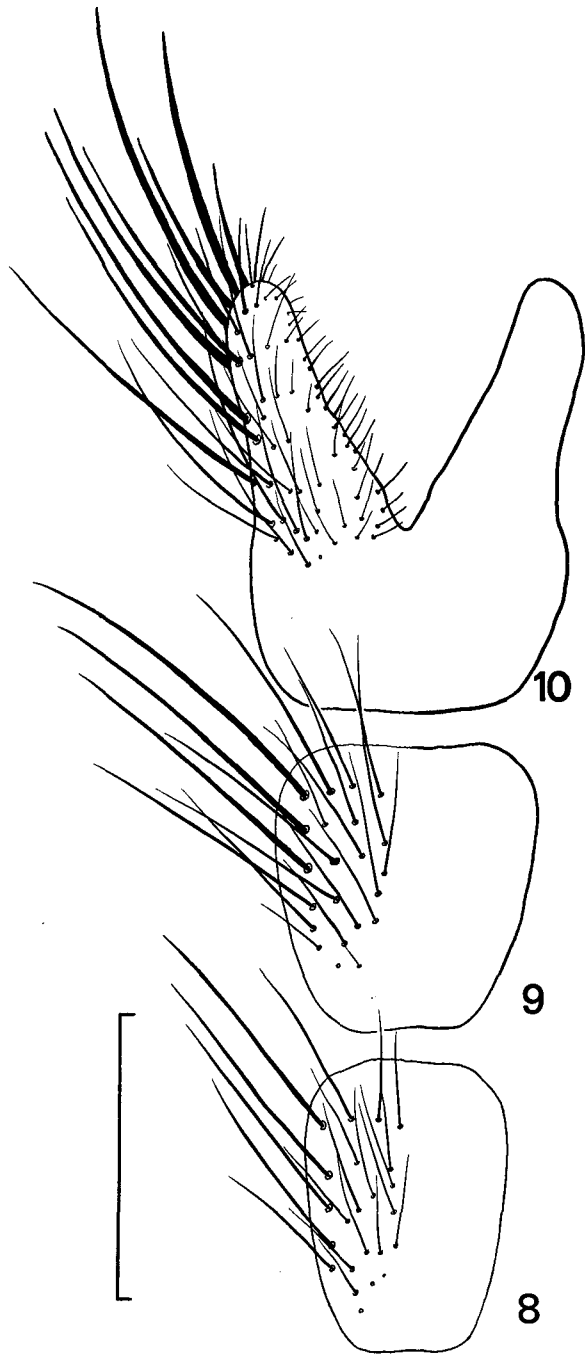
Head about 1.26 times as high as long; frons slightly wider than anterior ocellus; interfrontalia about half as wide as anterior ocellus, with a pair of distinct *if* and with an irregular pair of minute setulae above the *if*; parafrontals with 6 strong and some minute *ori* and with no *ors*;  $A_3$  (3rd antennal segment) about twice as long as wide; arista plumose, the longest hairs nearly 3 times as long as the basal diameter of arista; profrons slightly wider than  $A_3$ ; cheeks about 1.2 times as high as profrons-width, with some genal setae in a row; epistoma distinctly behind frons at lunule; palpi slender, a little widening apicad, and about 1.3 times as long as  $A_3$ ; occiput bare on upper plane.

Mesonotum with 4 irregular pairs of *pre-acr*, of which 1 or 2 pairs are strong, the longest seta slightly shorter than *post-ntpl*; the rows narrowly separated from each other by a distance less than half of that between *dc* and *acr* at the 2nd pair, and nearly contiguous just before the suture; 1 accessory setula present between the rows; 1 strong and 1–2 fine *ph*; *pra* distinct, slightly longer than half length of *post-ntpl*; mesopleura with no distinct anterior *mpl*, and with 1 strong and 1–2 weak *pstg* and some (3–6) fine associated setulae; *stpl* 1:2, 1 additional posterior seta present on the right body-side; scutellum hardly covered with accessory setulae on dorsum.

Abdomen depressed, about twice as long as wide; hypopygium rather well



Figs. 3-7. *Delia cuneata* Tiensuu, ♂.  
 3 & 4, hypopygium, dorsal view; 5, ditto, lateral view; 6, aedeagus; 7, ejaculatory apodeme. Scale, 0.5 mm for Figs. 3-6 and 0.25 mm for Fig. 7.



Figs. 8-10. *Delia cuneata* Tiensuu, ♂.  
8, 3rd sternite; 9, 4th sternite; 10, 5th sternite. Scale, 0.5 mm.

developed; 5th sternite (Fig. 10) with no strong setae along inner margin of processes; surstyli (Figs. 3 & 5) broadened in profile, and densely covered with ciliary hairs.

Fore tibia with 1 *pv* near middle and no *ad*, and with apical *pv* strong, blunt apically and a little curved upwards;  $f_2$  (right mid leg missing) with no distinct *av*, and on basal half with 5 strong *pv*, which are longer than height of the femur, the longest one about 1.6 times as long as the height;  $t_2$  with 1 *ad*, 2 *pd* and 2 *pv*, and with no *av*;  $f_3$  (right hind leg missing) with 5 strong *av* on basal half and 1 strong and 2 weak *av* near apex, and with some weak *pv* on basal third, 5 strong *pv* on middle third and a few rather strong *pv* near apex;  $t_3$  with 6 *av* (distal ones stronger), 5 *ad*, 3 *pd* and a row of 12 weak *pv*, apical *pd* being weak. Wings with costal thorns not strong yet rather distinct, as long as or shorter than anterior cross-vein (*r-m*); costa not setulose ventrally; posterior cross-vein (*m-m*) oblique and a little sinuate.

In having the plumose arista, the strong and blunt apical *pv* on  $t_1$ , the surstyli with a tuft of long ciliary hairs near the apex and the spinulose distiphallus *D. cuneata* belongs to the *coarctata*-group. This species is, however, easily distinguishable from any other members of the group by the broader surstyli.

It is not strange that the species is now known only from Scandinavia and Sakhalin. Among the Anthomyiidae there are some species known only from Scandinavia and Japan, e.g. *Meliniella bisinuata* (Tiensuu), *Craspedochoeta angulata* (Tiensuu), *Botanophila gemmata* (Zetterstedt), *Pegohylemyia rectangularis* Ringdahl, *Pegomyia avida* Hennig, etc. We have little knowledge as to the anthomyiid fauna of the vast area between Japan and Europe. There is a great possibility of finding them from cooler districts in the area as in the case of *D. conversata*.

#### 10. *Delia echinata* (Séguy, 1923)

*Delia echinata*: Hennig, 1974: 795; Suwa, 1974: 144; Ackland & Pont, 1977: 441.

Material examined. Sakhalin: — Tonnai, 1 ♂, 1–viii–1914 (Adachi & Isshiki); Ôtani, 1 ♀, 22–viii–1914 (Adachi & Isshiki). Kuriles: — Rubetsu, Etorofu, 1 ♀, 10–vii–1935 (Y. Sugihara).

Distribution. Sakhalin; Kuriles (Etorofu); Japan (Hokkaidô, Honshû, Shikoku & Kyûshû); Holarctic region; India.

#### 11. *Delia flabellifera* (Pandellé, 1900)

*Delia tristriata*: Suwa, 1974: 157. *Delia flabellifera*: Hennig, 1974: 804; Suwa, 1977a: 10.

Material examined. Kuriles: — Seseiki, Kunashiri, 1 ♂, 16–18–vii–1936 (Y. Sugihara).

Distribution. Kuriles (Kunashiri); Japan (Hokkaidô); Europe.

#### 12. *Delia floralis* (Fallén, 1824)

*Hylemyia floralis*: Katô, 1939: 1368. *Hylemyia (Delia) floralis*: Fan, 1965: 46. *Hylemyia floralis*: Kuwayama, 1967: 127. *Delia floralis*: Hennig, 1974: 816; Suwa, 1974: 146. *Hylemia floralis*: Ishitani, 1979: 303.

Material examined. Sakhalin: — Ôtomari, 2 ♂, 1 ♀, 28–vii–1914 (Adachi & Isshiki); Chirie, 1 ♀, 16–viii–1942 (H. Takahashi); Maoka-sandô, 1 ♀, 21–viii–1923 (S. Matsumura).

Distribution. Sakhalin; Kuriles (Kunashiri & Etorofu); Japan (Hokkaidô & Honshû); Kamchatka; Holarctic region.

This species is widely distributed in cooler parts of the Holarctic region. The first record from Sakhalin was given by Katô (1939) and that from the Kuriles by Kuwayama (1967). In Japan it had long been known only from Hokkaidô until Ishitani (1979) recorded it from Aomori-ken, northernmost Honshû, where it has been recognized since some years ago.

### 13. *Delia longitheca* Suwa, 1974

*Delia longitheca* Suwa, 1974: 160; id., 1981: 102.

Material examined. Kuriles: — Seseki, Kunashiri, 2 ♂, 1 ♀, 16–18–vii–1936 (Y. Sugihara); Chinomiji–Pondomari, Kunashiri, 1 ♂, 9–viii–1940 (S. Kuwayama & Y. Sugihara).

Distribution. Kuriles (Kunashiri); Japan (Hokkaidô, Honshû, Shikoku & Kyûshû); Korea (Quelpart I.).

This species is not rare in Japan. South of Hokkaidô, however, it seems to inhabit mainly mountainous areas.

### 14. *Delia planipalpis* (Stein, 1898)

*Hylemyia piliþyga*: Katô, 1939: 1371. *Hylemyia piliþyga*: Kuwayama: 1967: 127.

*Delia piliþyga*: Suwa, 1974: 147. *Delia planipalpis*: Hennig, 1974: 878; Suwa, 1977a: 8.

Material examined. No specimens of the species from Sakhalin or the Kuriles have been examined by myself.

Distribution. Kuriles (Shikotan, Kunashiri & Etorofu); Japan (Hokkaidô); Manchuria; Europe; North America.

This species was recorded from the Kuriles by Kuwayama (1967).

### 15. *Delia platura* (Meigen, 1826)

*Delia platura*: Hennig, 1974: 881; Suwa, 1974: 144.

Material examined. Sakhalin: — Ôtani, 2 ♂, 1 ♀, 22–viii–1914 (Adachi & Ishiki); Maoka, 1 ♀, 24–vii–1934 (C. Watanabe & T. Inoue); Maoka-sandô, 1 ♂, 21–viii–1923 (S. Matsumura); Kaiba-tô, 1 ♂, 30–vii–2–viii–1934 (C. Watanabe & T. Inoue).

Distribution. Cosmopolitan. This species is widely distributed in the world, yet has not been recorded from the Kuriles.

### 16. *Delia takizawai* Suwa, 1974

*Delia takizawai* Suwa, 1974: 155.

Material examined. Kuriles: — Seseki, Kunashiri, 1 ♀, 16–18–vii–1936 (Y. Sugihara).

Distribution. Kuriles (Kunashiri); Japan (Hokkaidô, Honshû & Kyûshû).

In Japan this species appears in spring in lowlands and later in mountains.

### 17. *Delia tenuiformis* Suwa, 1977

*Delia tenuis* Suwa, 1974: 163, nec Drew, 1963. *Delia tenuiformis* Suwa, 1977a: 10, pro *tenuis* Suwa, 1974.

Material examined. Sakhalin: — Toyohara, 3 ♂, 29–vii–1914 (Adachi & Is-

shiki), & 3♂, 24–viii–1914 (Adachi & Isshiki); Ôtani, 1♂, 22–viii–1914 (Adachi & Isshiki); Ôtomari, 1♂, 28–vii–1914 (Adachi & Isshiki).

Distribution. Sakhalin; Japan (Hokkaidô).

In having some *pv* on  $f_3$  the present species resembles *D. cuneata*, from which it is, however, readily distinguished by  $t_1$  without a strong apical *pv*.

#### 18. *Hylemyia latifrons* Schnabl, 1911

*Hylemyia latifrons*: Hennig, 1969: 243; Suwa, 1974: 81.

Material examined. Kuriles: — Paramushiru, 1♂, 23–vii–1935 (Nishi, Hatsumi, Oka & Ôta).

Distribution. Kuriles (Paramushiru); Japan (Hokkaidô & Honshû); Kamchatka; Manchuria; Europe; North America.

#### 19. *Lasionomma octoguttatum* (Zetterstedt, 1845)

*Hylemyia subciliocrura* Séguy, 1937: 30. *Hylemyia (Delia) subciliocrura*: Fan, 1965: 49.

*Lasionomma octoguttatum*: Hennig, 1968: 193; Suwa, 1974: 87; Hennig, 1976: 925.

Material examined. Kuriles: — Tokotan, Uruppu, 1♂, 9–23–viii–1936 (Y. Sugihara).

Distribution. Kuriles (Uruppu); Japan (Hokkaidô & Honshû); China; Europe; North America.

#### 20. *Paraprosalpia silvatica* Suwa, 1974

*Paraprosalpia silvatica* Suwa, 1974: 62.

Material examined. Kuriles: — Seseki, Kunashiri, 1♀, 16–18–vii–1936 (Y. Sugihara).

Distribution. Kuriles (Kunashiri); Japan (Hokkaidô).

#### 21. *Paraprosalpia silvestris* (Fallén, 1824)

*Paraprosalpia (Paraprosalpia) silvestris*: Hennig, 1967: 97. *Paraprosalpia silvestris*: Suwa, 1974: 64; Hennig, 1976: 936.

Material examined. Sakhalin: — Sachi, 1♀, 17–viii–1942 (H. Takahashi).

Distribution. Sakhalin; Japan (Hokkaidô & Honshû); Kamchatka; Irkutsk; Europe; North America.

#### 22. *Pegohylemyia angulosa* (Ringdahl, 1930)

*Pegohylemyia angulosa*: Hennig, 1970: 354; Suwa, 1974: 104.

Material examined. Kuriles: — Paramushiru, 1♂, 12–viii–1935 (Nishi, Hatsumi, Oka & Ôta).

Distribution. Kuriles (Paramushiru); Japan (Hokkaidô); Kamchatka.

In having the frons a little wider than the anterior ocellus the present specimen from the Kuriles agrees better with the holotype of *angulosa* from Kamchatka redescribed by Hennig (1970) than with the specimens at hand of this species from Hokkaidô, in which the frons is at most as wide as the anterior ocellus. There is no other significant difference between the specimens from the Kuriles and Hokkaidô.

23. *Pegohylemyia macra* Karl, 1940

*Pegohylemyia macra*: Hennig, 1970: 385; Suwa, 1974: 119; Hennig, 1976: 954.

Material examined. Kuriles: — Rubetsu, Etorofu, 1 ♂, 2-10-vii-1935 (Y. Sugihara).

Distribution. Kuriles (Etorofu); Japan (Hokkaidô\* & Honshû); Irkutsk; Eastern Turkestan; Finland.

This species was originally described from Finland, and there had been no additional record until Hennig (1970 & 1976) and Suwa (1974) added a few localities in mountainous or cold areas of Asia. They also pointed out that the species might be identical with the North American *Pegohylemyia betarum* (Lintner). The records of these forms all fall in cooler districts.

24. *Pegohylemyia sonchi* (Hardy, 1872)

*Pegohylemyia sonchi*: Hennig, 1970: 415; Suwa, 1974: 116.

Material examined. Sakhalin: — Ichinosawa, 1 ♂, 15-viii-1923 (S. Matsu-mura).

Distribution. Sakhalin; Japan (Hokkaidô); Europe.

The condition of the present specimen is very poor. Some characters will be given as follows: —

♂. Body-length 4.7 mm; wing-length 4.3 mm. Frons a little narrower than twice width of anterior ocellus; interfrontalia slightly wider than anterior ocellus;  $A_3$  about 1.8 times as long as wide; profrons about 1.3 times as wide as  $A_3$ ; parafacials at the narrowest part slightly wider than  $A_3$ ; cheeks slightly higher than profrons-width, with genal setae in 1 row; epistoma slightly behind frons at lunule. Hypopygium and 5th sternite agree well with those of *sonchi* figured by Hennig (1970) and by Suwa (1974).

25. *Pegohylemyia striolata* (Fallén, 1824)

*Pegohylemyia striolata*: Hennig, 1970: 417; Suwa, 1974: 99; id., 1977b: 28.

Material examined. Kuriles: — Furukamappu, Kunashiri, 1 ♂, 15-viii-1940 (S. Kuwayama & Y. Sugihara).

Distribution. Kuriles (Kunashiri); Japan (Hokkaidô & Honshû); Kamchatka; Siberia; Europe; Nepal.

In common with the Japanese form the present specimen has the frons distinctly less than twice as wide as anterior ocellus and  $t_2$  with only 1 *ad*.

26. *Pegomya criniventris* Suwa, 1974

*Pegomya criniventris* Suwa, 1974: 193.

Material examined. Kuriles: — Tokotan, Uruppu, 1 ♂, 4 ♀, 9-23-viii-1936 (Y. Sugihara).

Distribution. Kuriles (Uruppu); Japan (Hokkaidô & Honshû).

---

\* *P. macra* has been known to occur in Japan on the basis of a single male specimen from Mt. Hodaka, Central Honshû. Recently I have examined 1 male specimen from Hokkaidô (Hamatombetsu, 1 ♂, 15-viii-75, H. Torikura leg.).

27. *Pegomya geniculata* (Bouché, 1834)

*Pegomya geniculata*: Hennig, 1973: 563; Suwa, 1974: 211.

Material examined. Kuriles: — Seseki, Kunashiri, 1 ♂, 1 ♀, 16–18–vii–1936 (Y. Sugihara).

Distribution. Kuriles (Kunashiri); Japan (Hokkaidô & Honshû); Europe; North America.

According to Hennig (1973) this species has two seasonal forms, namely the spring form with pale body-colour and the summer-autumn form with dark body-colour. The present specimens are largely yellowish in ground colour except on a few parts, and are referable to the spring form in his sense.

28. *Pegomya pulchripes* (Loew, 1825)

*Pegomya pulchripes*: Hennig, 1973: 617; Suwa, 1974: 213.

Material examined. Seseki, Kunashiri, 1 ♂, 16–18–vii–1936 (Y. Sugihara).

Distribution. Kuriles (Kunashiri); Japan (Hokkaidô & Honshû); Europe.

The present specimen is largely yellowish in ground colour and is referred to the light-form of Suwa (1974). As in the case of the preceding *P. geniculata* this species may also have 2 seasonal forms different in colour.

29. *Pegomya vera* Suwa, 1974

*Pegomya vera* Suwa, 1974: 223.

Material examined. Kuriles: — Seseki, Kunashiri, 3 ♀, 16–18–vii–1936 (Y. Sugihara).

Distribution. Kuriles (Kunashiri); Japan (Hokkaidô, Honshû & Kyûshû).

REFERENCES

- Ackland, D.M. & Pont, A.C. 1977. Family Anthomyiidae. In Delfinado, M.D. & Hardy, D.E. (ed.), A catalog of the Diptera of the Oriental region. 3: 439–446.
- Endô, K. 1944. [The onion maggot and its control.] Hokunô 11: 77–80 (in Japanese).
- Fan, T. 1965. [Keys to common flies in China.] 330 pp. (in Chinese). Peking.
- Hennig, W. 1966–1976. Anthomyiidae. In Lindner's Flieg. palaearkt. Region. 63a: 1–974.
- Ishitani, M. 1979. [Biology and control of the turnip maggot.] Shokubutsu-bôeki 33: 303–308 (in Japanese).
- Katô, S. 1939. Taxonomic notes on some *Hylemyia* species (Dipt., Muscidae) injurious to agricultural plants in Nippon and Manchoukuo. Botany and Zoology 7: 1367–1376 & 1529–1538 (in Japanese).
- 1951. [Notes on the spread of the onion maggot (*Hylemyia antiqua* Meigen) in Japan, with some distinguishing characters of the species.] Nôrinshô Bôeki-jihô 22: 28–33, 1 pl. (in Japanese).
- Kuwayama, S. 1967. Insect fauna of the Southern Kurile Islands. 225 pp., 6 pls. (in Japanese). Sapporo.
- Malloch, J.R. 1920. Scientific results of the Katmai Expedition of the National Geographic Society. XII. Descriptions of Diptera of the families Anthomyiidae and Scatophagidae. Ohio Journ. Sci. 20: 267–291.
- Suwa, M. 1974. Anthomyiidae of Japan (Diptera). Ins. matsum. n.s. 4: 1–247.
- 1977a. Supplementary notes on the family Anthomyiidae of Japan, I (Diptera). Ins. matsum. n.s. 10: 1–16.
- 1977b. Anthomyiidae collected by the Hokkaidô University Expeditions to

- Nepal Himalaya, 1968 and 1975 (Diptera). *Ins. matsum. n.s.* 10: 17-51.
- 1981. Notes on Anthomyiidae (Diptera) from Korea, with description of a new species. *Kontyû* 49: 102-108.
- Tiensuu, L. 1935. Die bisher aus Finnland bekannten Musciden. *Acta Soc. pro Fauna et Flora Fenn.* 58: 1-56.
- 1946. Beiträge zur Musciden-fauna Nordeuropas (Dipt.). *Ann. ent. Fenn.* 12: 63-68.